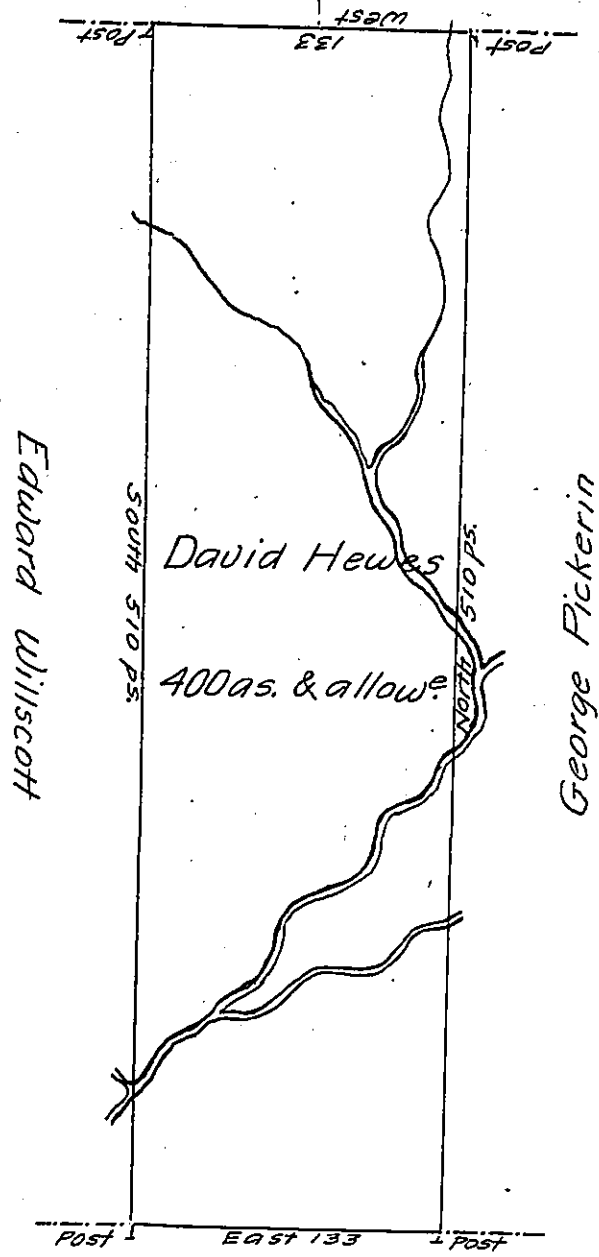


Wm. Thorne Saml. Langdale

P-32-424



Benj<sup>n</sup> Seyhawk

Draft of a tract of land called \_\_\_\_\_ Situate on the  
 waters of Wyalusing Creek Joining Land Surveyed for William Thorne  
 and others in Northumberland county containing four Hundred Acres &  
 allowance of Six p.Cent for roads &c. Surveyed for David Hewes the  
 15th. Day of Novr. 1784 in Pursuance of a warrant dated the 6th. Day of  
 July 1784.

by

Wm. Gray D.S.

To John Lukens Esqr. }

Suror. Genl. }

now Luzerne

IN TESTIMONY that the above is a copy of the original remaining on file in  
 the Department of Internal Affairs of Pennsylvania, made  
 conformably to an Act of Assembly approved the 16th day of  
 February, 1833, I have hereunto set my Hand and caused  
 the Seal of said Department to be affixed at Harrisburg,  
 this first day of June 1905

*Loac O. ...*  
 Secretary of Internal Affairs.